



IFL 50-385-11P-M20

- Thermoplastic enclosure
- DC 4-wire
- Double-insulated
- Wiring compartment
- 3 cable entries M 20 x 1.5
- Design 385

Data

Ordering data

Product type description	IFL 50-385-11P-M20
Article number (order number)	101174071
EAN (European Article Number)	4030661303239
eCl@ss number, Version 9.0	27-27-01-01
eCl@ss number, Version 11.0	27-27-01-01
ETIM number, version 7.0	EC002714
ETIM number, version 6.0	EC002714

Approval - Standards

Certificates	CCC
--------------	-----

General data

Standards	IEC/EN 60947-5-2 DIN VDE 0660-208
Housing construction form	Block
Installation conditions (mechanical)	not flush

Enclosure material	Plastic
Gross weight	415 g

General data - Features

Integral System Diagnostics, status	Yes
Number of cable wires	4

Mechanical data - Switching distances according IEC 60947-5-3

Switch distance S_n	70 mm available on request
Switch distance	50 mm

Mechanical data - Connection technique

Terminal Connector	Screw terminals M20 x 1.5
Cable section, maximum	2 x 1.5 mm ²

Mechanical data - Dimensions

Length of sensor	40 mm
Width of sensor	80 mm
Height of sensor	135 mm

Ambient conditions

Degree of protection	IP67 to EN 60529
Ambient temperature, minimum	-25 °C
Ambient temperature, maximum	+70 °C
Protection rating	II

Electrical data

Voltage type	DC (direct current)
--------------	---------------------

Operating voltage, minimum	10 V
Operating voltage, maximum	60 V
No-load supply current I_0	5.5 mA
Operating current	400 mA
Switching element	NO contact and NC contact (antivalent)
Protection circuit integrated	inductive interference protection Protection against polarity reversal
Switching frequency, approx.	25 Hz

Electrical data - Digital Output

Voltage drop U_d , maximum	1.5 V
Current at Voltage drop U_d	0.4 A
Versions	p-type

Status indication

Note (Integral System Diagnostics, status)	yellow LED
---	------------

Notes

Note (General)	Mounting angle HW 385-1 to simplify mounting available
----------------	--

Ordering code

Product type description:
IFL (1)-(2)-(3)(4)(5)(6)(7)

(1)		
50		Switching distance 50 mm
(2)		
385		Square design, 135 x 80 x 40 mm
(3)		
01		Opener (NC)
10		Normally open contact (NO)
10/01		NO contact / NC contact with wiring compartment
11		1 NO contact / 1 NC contact antivalent
(4)		
without		Cable
D		DC 2-wire
(5)		
Z		Protection class IP67
(6)		
N		n-type
P		p-type
(7)		
2130		Can be used up to +130 C, without LED switching conditions display

Pictures

Product picture (catalogue individual photo)



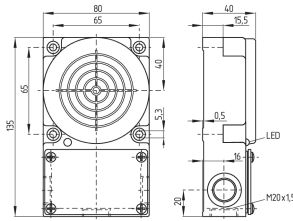
ID: kif15f25

| 1.1 MB | .jpg | 352.778 x 529.167 mm - 1000 x 1500 px - 72

dpi

| 87.1 kB | .png | 74.083 x 111.125 mm - 210 x 315 px - 72 dpi

Dimensional drawing basic component



ID: 1if15g05

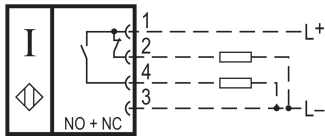
| 30.5 kB | .cdr |

| 14.2 kB | .png | 74.083 x 51.153 mm - 210 x 145 px - 72 dpi

| 166.3 kB | .jpg | 352.778 x 243.769 mm - 1000 x 691 px - 72

dpi

Diagram



ID: id4ak01

| 34.8 kB | .cdr |

| 56.9 kB | .jpg | 352.778 x 146.756 mm - 1000 x 416 px - 72

dpi

Schmersal Canada Ltd., 29 Centennial Road, Unit 1, Orangeville, Ontario L9W 1R1 Canada

The details and data referred to have been carefully checked. Images may diverge from original. Further technical data can be found in the manual. Technical amendments and errors possible.

Generated on: 22/12/2021, 11:42